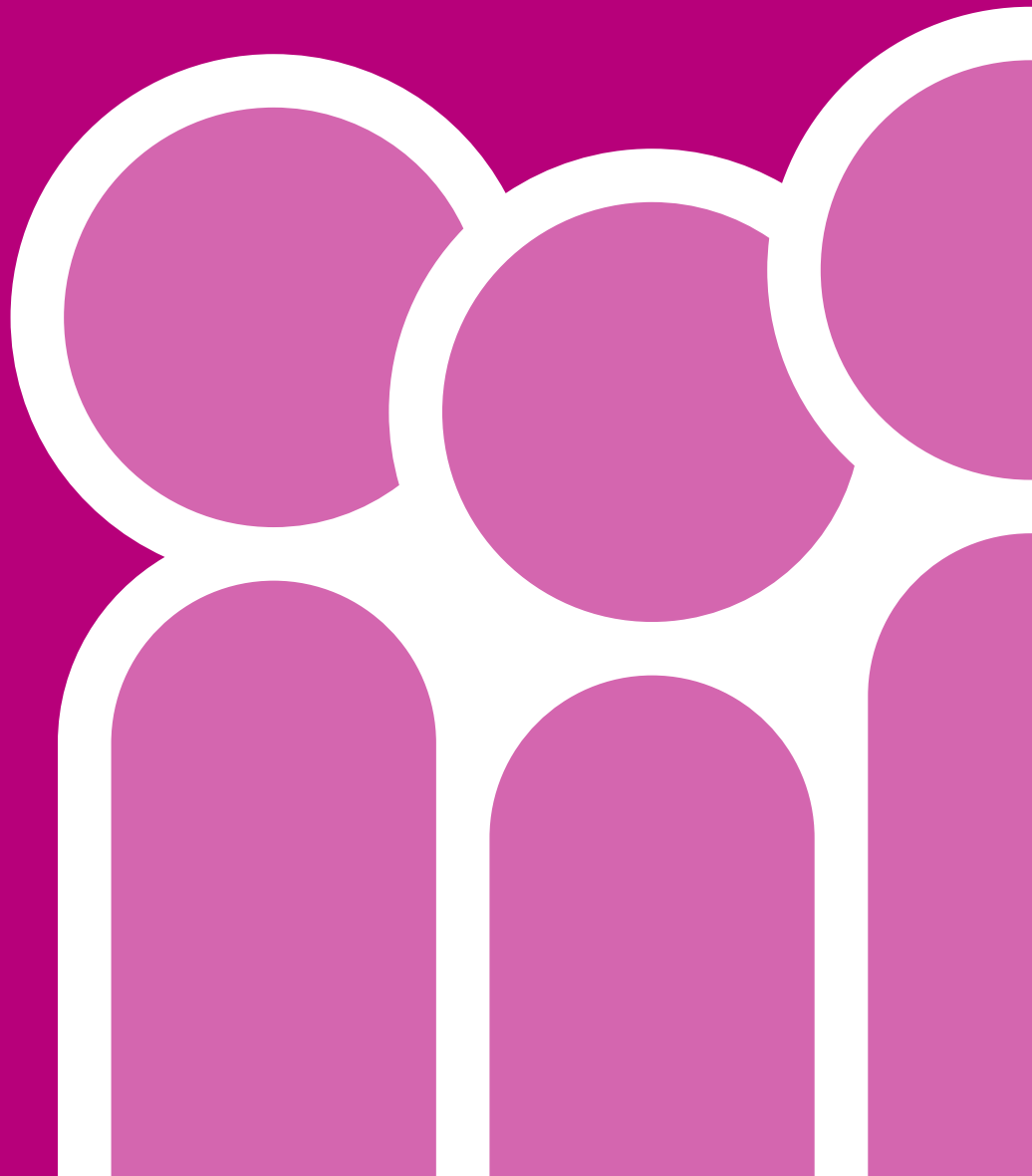


Volume 5, Issue 2 (2008)

On Being an Integrative Psychotherapist



Volume 5, Issue 2 (2008)

The British Journal Of Psychotherapy Integration

Introduction

The British Journal of Psychotherapy Integration is the official journal of the United Kingdom Association for Psychotherapy Integration. It is published twice a year.

Contacting Us

Please address all correspondence to:

Consulting Editors
PO Box 2512
Ealing
London W5 2QG

Alternatively you can email us at:
journal@ukapi.com

For general information regarding UKAPI
please visit our web site:
www.ukapi.com

Copyright

Copyright belongs to the United Kingdom Association for Psychotherapy Integration. Material may only be reproduced in other publications with written permission from the Consulting Editors. Authors may use their own material elsewhere after publication without permission. Production of single copies for personal use is allowed without special permission.

Submissions

Future volumes of this journal will be on theme issues based in an integrative perspective. Two members of the editorial board will act as co-editors with the support of the two consulting editors. If you are interested in submitting please visit our web site (www.ukapi.com/journal/) and download a copy of the submission guidelines.

Consulting editors:

Maria Gilbert and Katherine Murphy

Editorial Board members:

Andrea Perry
Annemarie Salm
Charlotte Sills
Christine Shearman
Diana Shmukler
Harbrinder Dhillon Stevens
Heward Wilkinson
Jane Speedy
Jean O'Callaghan
Ken Evans
Maggie Senior
Patricia Pitchon
Patti Wallace
Phil Lapworth
Werner Prall

Volume 5, Issue 2 (2008)

Contents Of This Issue

Editorial	
On Being An Integrative Psychotherapist	4
Marvin R. Goldfried	
How I View Psychotherapy Integration	6
Heward Wilkinson	
Poetic Integration: The Muse As Therapist	11
Tom Warnecke	
The Well Tempered Therapist: Psychotherapy Integration And The Personality Of The Therapist	16
Tree Staunton	
Finding A Relational Home For The Body	21
Phil Lapworth and Charlotte Sills	
To Skin A Cat... A Personal Approach To Psychotherapy Integration	26
Tricia Scott	
Magic In The Consulting Room	31
Vanja Orlans	
The Interplay Of The Intrapsychic, The Intersubjective And The Contextual: Integration In Action	35
Keith Silvester	
On Being An Integrative Psychosynthesis Therapist	40
Katherine Murphy	
On Being An Integrative Practitioner: Principles Of Integrative Psychotherapy In Practice	45
Ros Guthrie	
Integrative Psychotherapy MSc Dissertation	50
Book Review By Helen-Jane Ridgeway	
Trauma And The Body: A Sensorimotor Approach To Psychotherapy	63
Book Review by Bobby Moore	
Narrative Inquiry And Psychotherapy	67

Editorial

On Being An Integrative Psychotherapist

For the purposes of this edition of the journal, the editor of this issue Katherine Murphy invited practitioners and trainers who are active in the integrative field to submit a brief paper on their current personal perspective on integration and integrative practice. The brief was intentionally very broad and what we hoped is that each contributor would speak personally to this project. As you will see each contributor has engaged with the task in an individual and often passionate way. There is a mixture of the personal and the professional, of philosophy and practice, and there are certain common themes that emerge. We are choosing not to comment on each contribution in this editorial to leave you free to relate to each in turn with freshness and curiosity.

We wish to thank the contributors for their willingness to speak both personally and professionally keeping to the brief about their individual views of integration. These were varied and people chose the emphasis they wished to give to this endeavour.

As is our tradition we have included an example of a student theoretical discussion of her integrative framework taken from her final dissertation for her MSc in Integrative Psychotherapy.

We have also included two book reviews.

We are planning some more editions on particular themes. Some possible themes are “Sexuality, Gender Identity and Sexual Orientation”; “An Integrative Approach to Working with Children and

Adolescents”; and an edition on the political and social contributions of Integrative Psychotherapy in the wider field.

We invite readers who may be interested in these themes to come forward as co-editors of a special edition. We also invite you all to consider contributing an article to the journal on any of the above themes or any other theme related to Psychotherapy Integration.

These can be forwarded to the editor@ukapi.com. Please view our submission guidelines on our web site. www.ukapi.com/journal/

Maria Gilbert and Katherine Murphy.
Consulting editors of this issue.

